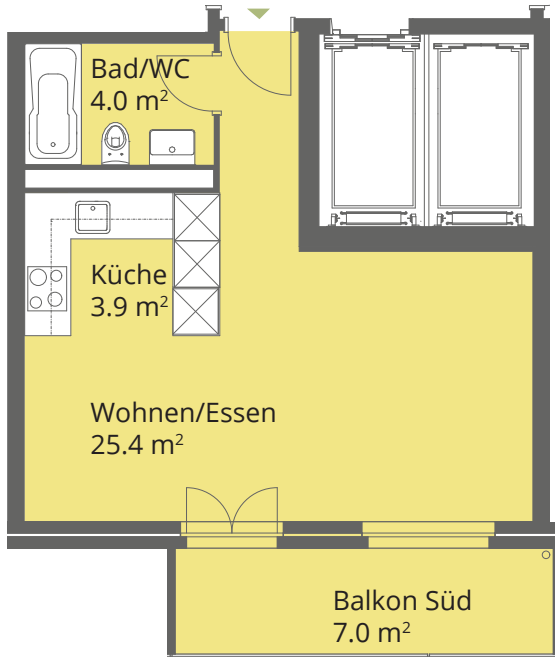
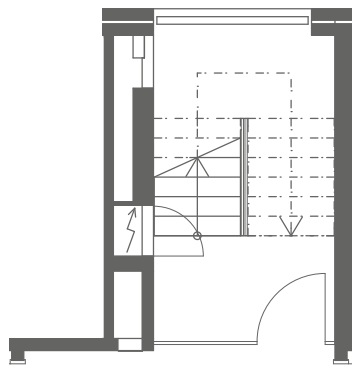
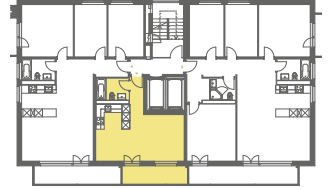
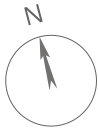
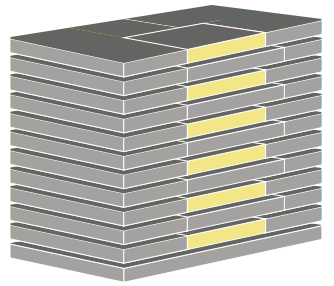


# Waldhofstrasse

## Typ 1.5-Zimmer Mitte

Gerade Stockwerke



### Vermietung und Bewirtschaftung

Barrier Immobilien AG  
Rüt mattstrasse 12  
5004 Aarau

T 062 832 60 50  
info@barrier.ch  
www.barrier.ch

### Ihre Kontaktperson

Mario Gelsomino  
mario.gelsomino@barrier.ch